

Changing Directory

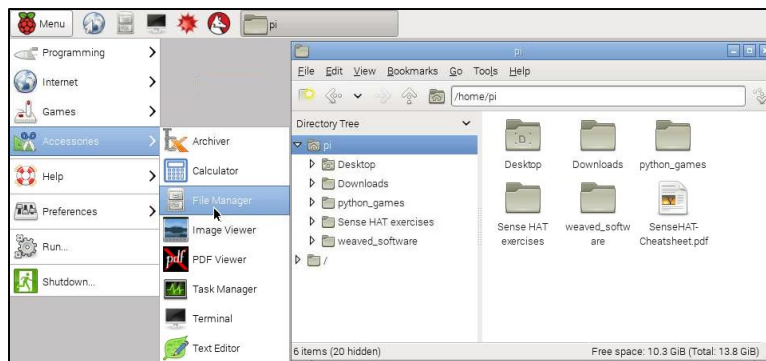


Changing Directory

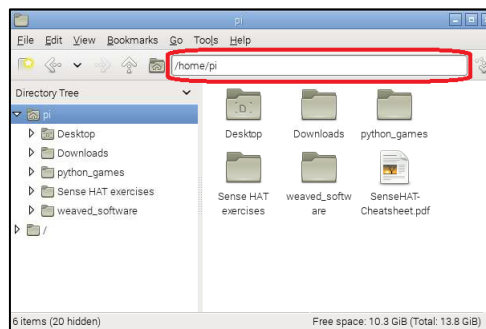
Card 1 of 1

I'm Learning Pi Basics

1 Can you find and open the **file manager** program on the main menu or the task bar? (Hint: It is under the Accessories sub-menu).



2 Normally the file browser will open up at the pi user's **home directory** (remember you are logged in as the user named pi). Can you find where the file explorer shows you this piece of information?



3 Your Mac or Windows computer usually has the C:/ location at the **root**, or top of all the other directories. This simply means that all other directories are contained within the C:/ directory. On the Raspberry Pi the root directory is called / (just a forwards slash). Can you use the file browser to navigate to the / directory?

4 Within the root directory you can see that the file explorer shows all the other directories and **files** that it contains.

