

Changing Directory

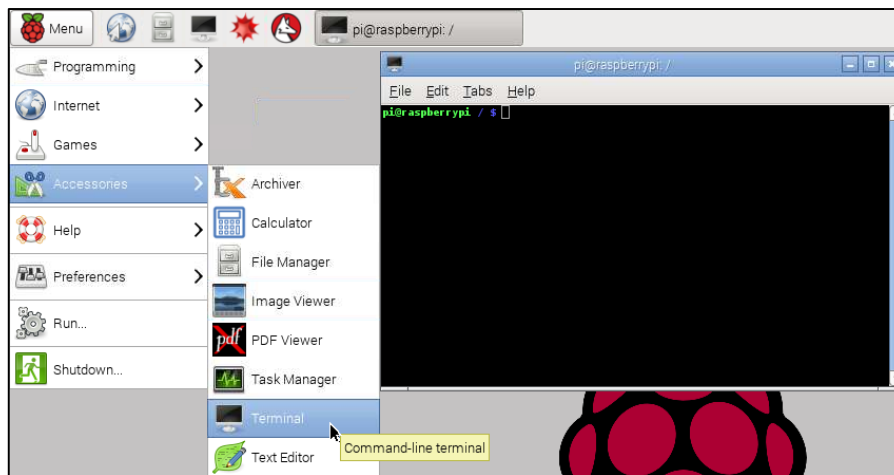


Changing Directory

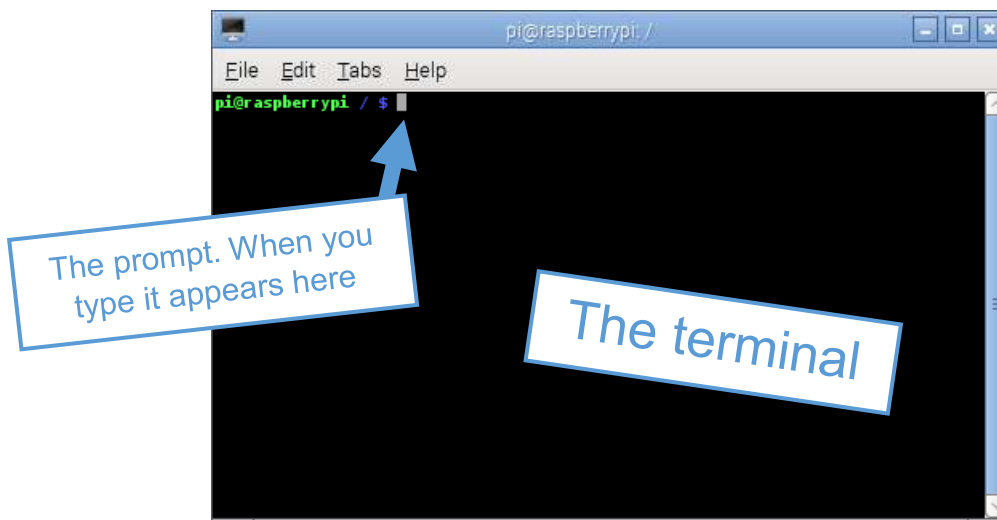
Card 1 of 2

I'm Learning Pi Basics

1 Can you find and open the **CLI terminal** (command line interface terminal) program on the main menu or task bar? (Hint: It is under the Accessories sub-menu).



2 The CLI is another way of interacting with the operating system.



3 Normally the terminal will open the CLI at the **root directory** by default. On the Raspberry Pi the root directory is called / (just a forwards slash). Can you see where the CLI shows you this piece of information? Linux calls whichever directory you are currently in the working directory



Changing Directory



Changing Directory

Card 2 of 2

I'm Learning Pi Basics

4 The CLI command prompt also shows the user name and the device name. Can you see these?

```
pi@raspberrypi / $
```

5 The CLI does not use mouse input so to make the system do something you need to type commands at the command prompt. First you can confirm your location by using the **print working directory** command. To do so type **pwd**, which should print out / (for root) on the next line.

```
pi@raspberrypi / $ pwd  
/
```

6 Try navigating to the pi user's home directory (remember you are logged in as the user named pi). You can use the **change directory** command by typing **cd** followed by the directory you wish to change to, in this case /home/pi. Can you see how the prompt changes to show your new location?

For this special directory the CLI command prompt uses a shortcut to show this. Instead of showing /home/pi it shows a ~ symbol (which is called a tilde, pronounced "tild-eh").

```
pi@raspberrypi / $ cd /home/pi  
pi@raspberrypi ~ $
```

7 Within the home directory you can see all the other directories and **files** that it contains using the **list** command by typing **ls**.

```
pi@raspberrypi ~ $ ls  
Desktop Downloads
```