

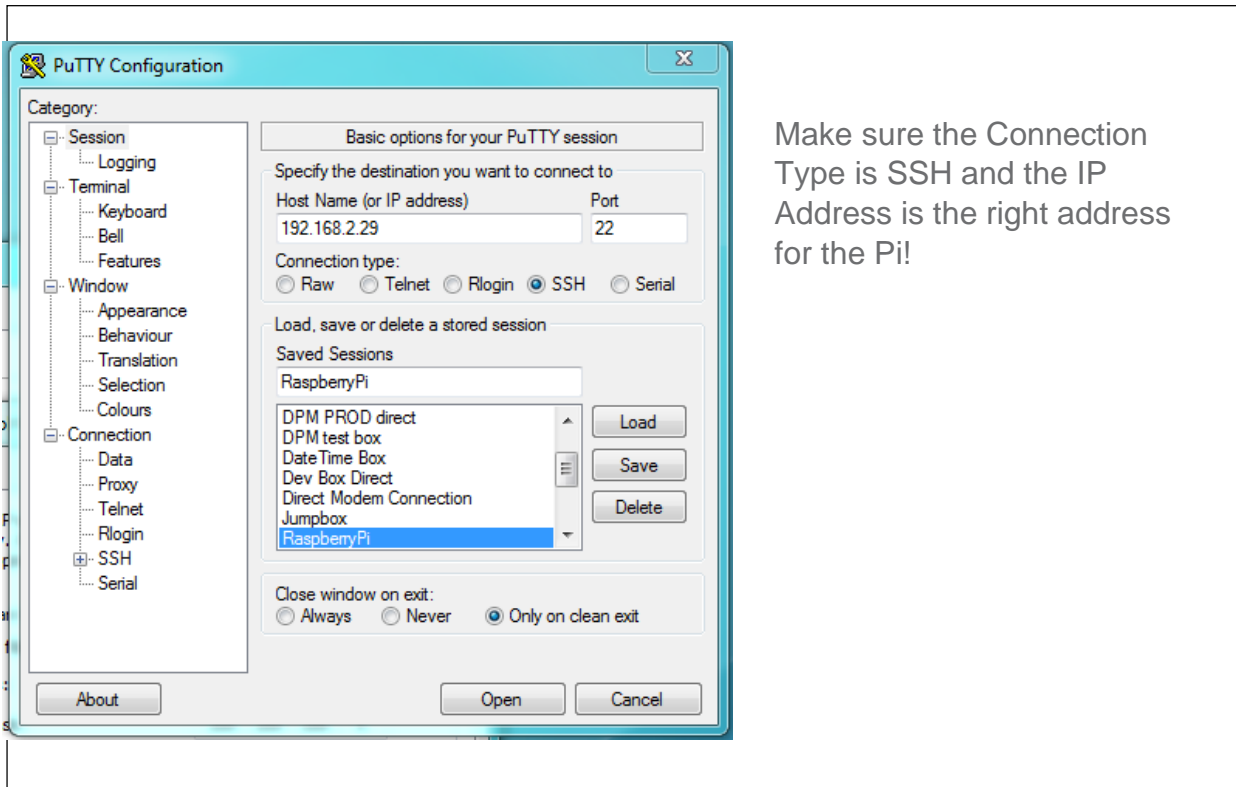
# Raspberry Pi



I'm Learning about  
Accessing my Pi using Putty

Card 1 of 5

**1** Putty is a Windows Terminal Emulator. You can download the program from [www.putty.org](http://www.putty.org). When you run the application you will need to enter the IP Address of your Pi.

A screenshot of the PuTTY Configuration dialog box. The 'Category' list on the left is expanded to 'SSH'. The 'Basic options for your PuTTY session' section shows 'Host Name (or IP address)' set to '192.168.2.29' and 'Port' set to '22'. The 'Connection type' section has 'SSH' selected with a radio button. The 'Saved Sessions' list contains several entries, with 'RaspberryPi' selected and highlighted in blue. The 'Close window on exit' section has 'Only on clean exit' selected. The 'Open' button is visible at the bottom right of the dialog box.

Make sure the Connection Type is SSH and the IP Address is the right address for the Pi!

You should now see a terminal session started and you can login using your Pi credentials.

# Raspberry Pi



I'm Learning about  
Accessing my Pi using Putty

Card 2 of 5

```
pi@raspberrypi14: ~  
login as: pi  
pi@192.168.2.29's password:  
Linux raspberrypi14 3.18.11+ #781 PREEMPT Tue Apr 21 18:02:18 BST 2015 armv6l  
  
The programs included with the Debian GNU/Linux system are free software;  
the exact distribution terms for each program are described in the  
individual files in /usr/share/doc/*/copyright.  
  
Debian GNU/Linux comes with ABSOLUTELY NO WARRANTY, to the extent  
permitted by applicable law.  
Last login: Fri Oct 23 12:05:21 2015 from 192.168.2.229  
pi@raspberrypi14 ~$
```

Login to the shell with the your  
Pi user and password

Id: pi

Password: raspberry

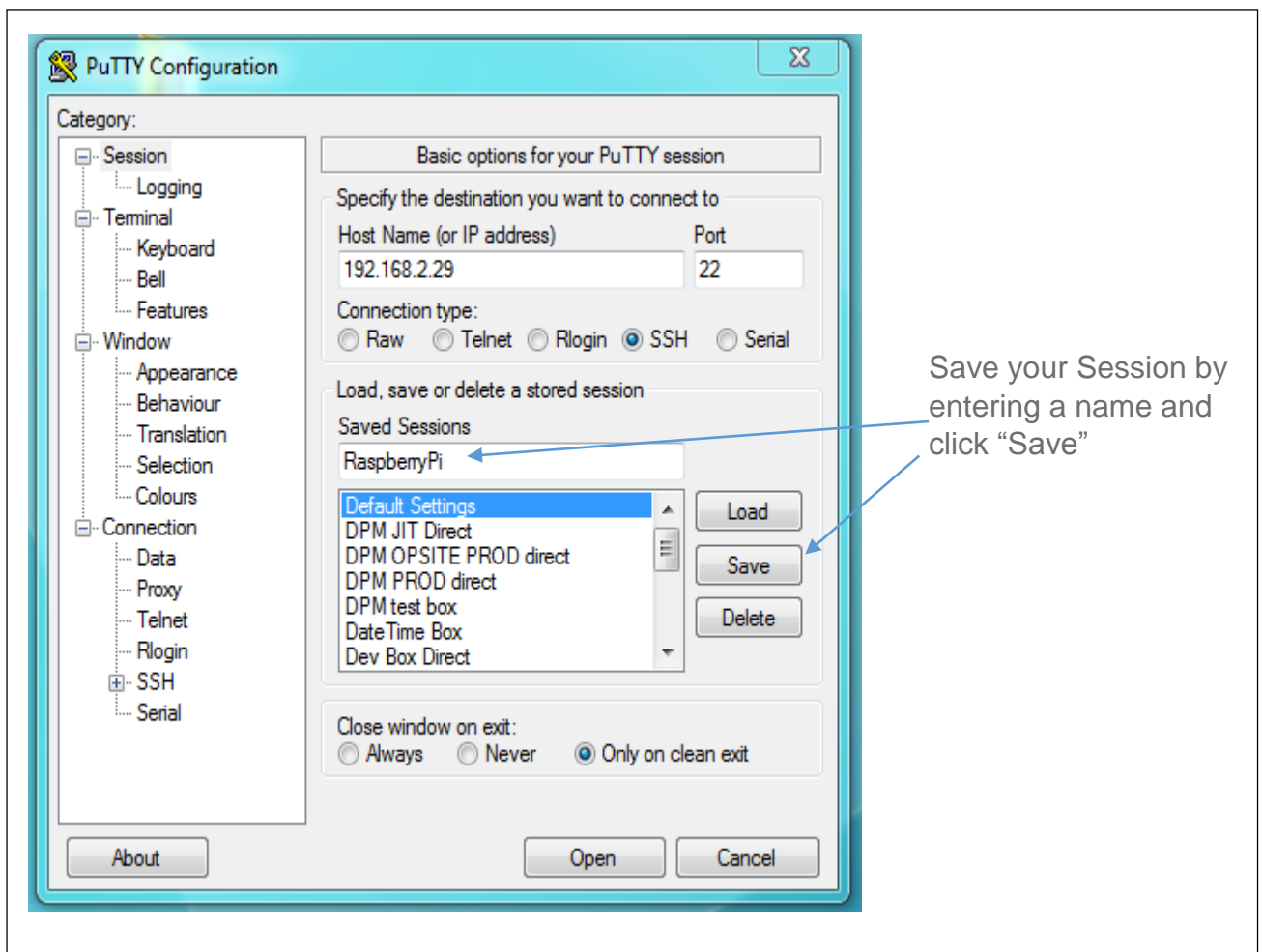
# Raspberry Pi



I'm Learning about  
Accessing my Pi using Putty

Card 3 of 5

**2** You can save this connection in a Profile which you can load the next time you want to access your Pi.



**!** This is the first screen showing the Session Category information. There are many more Categories you can configure before you start your session. Some Categories can also be changed when you have an active session!

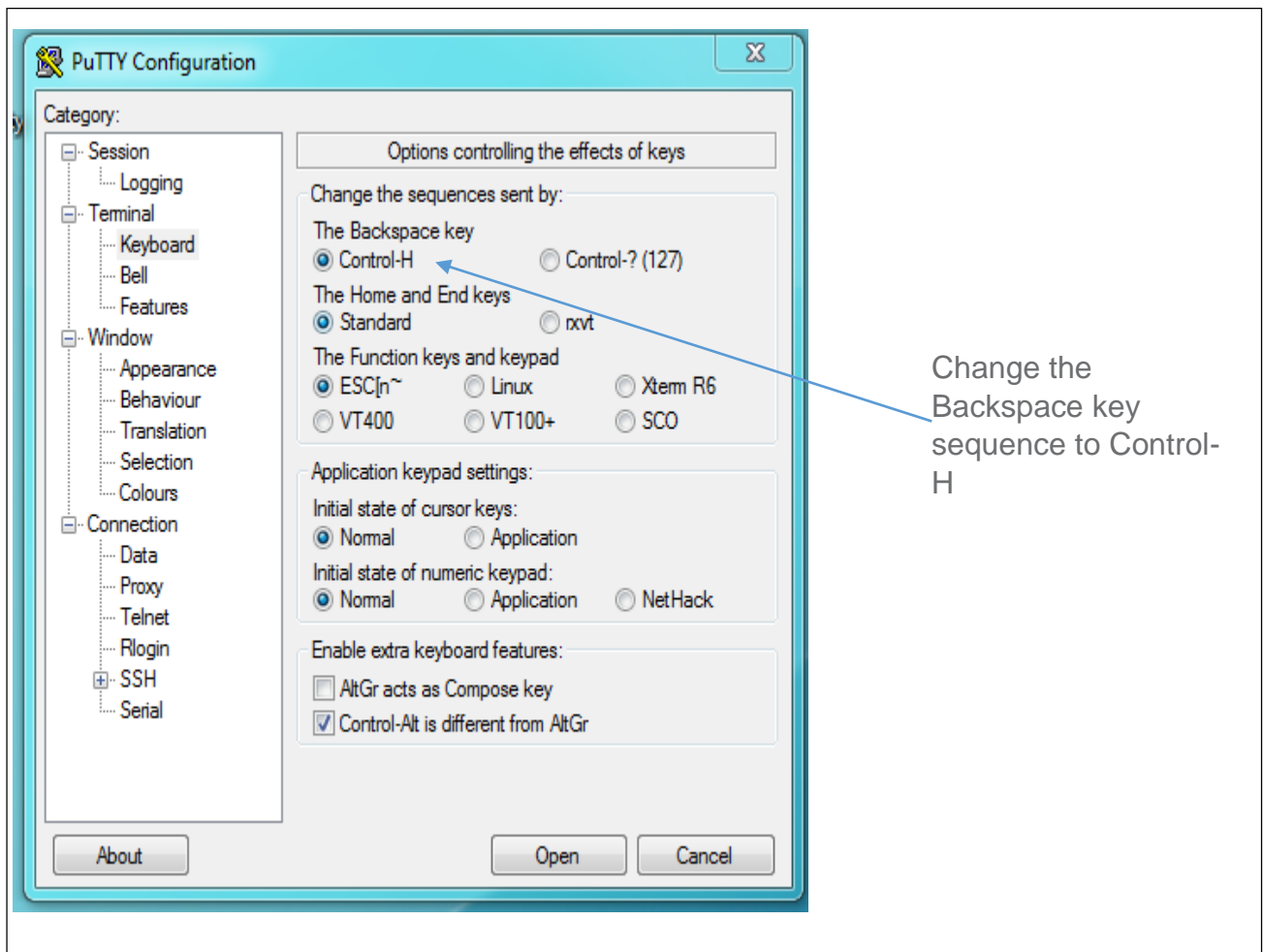
# Raspberry Pi



I'm Learning about  
Accessing my Pi using Putty

Card 4 of 5

**3** When using Putty you may find that some programs in Linux do not process the backspace key correctly. You can modify the backspace key behavior using the Terminal Keyboard Settings.



Change the  
Backspace key  
sequence to Control-  
H

**!** Don't forget to save your changes by switching back to the Session Category and clicking "Save"

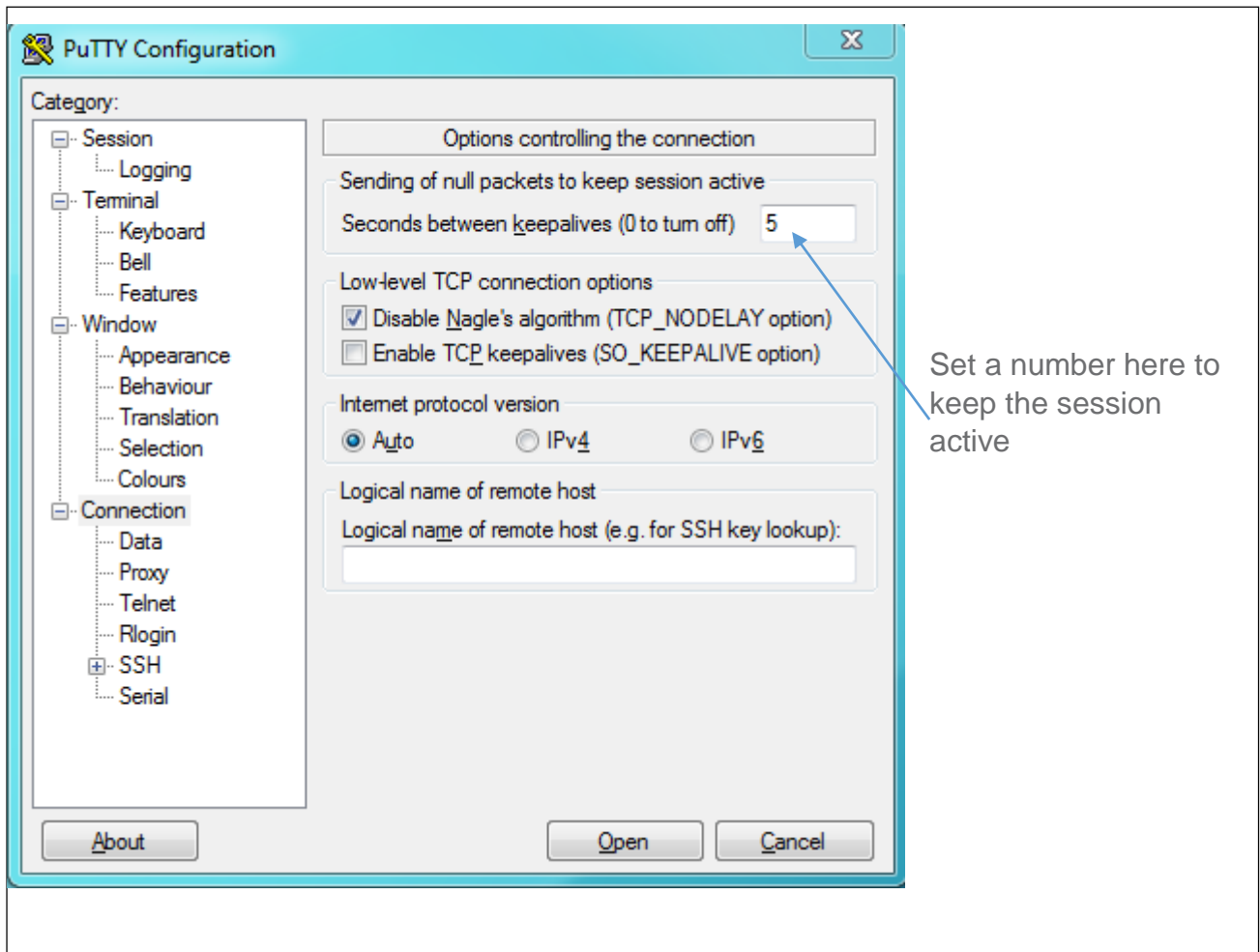
# Raspberry Pi



I'm Learning about  
Accessing my Pi using Putty

Card 5 of 5

**4** When using Putty you may find that you get disconnected from your Pi after a period of inactivity. You can force Putty to keep the session alive and active.



**!** Don't forget to save your changes by switching back to the Session Category and clicking "Save"